

## Ramsey Silent Chain Powers Floating, High Volume Water Pump

Made to relocate water, the floating pump is a unique piece of equipment that moves water from a place of plenty to a place where it is needed. Or it can work in the opposite – removing water from an area where it is not wanted, as in the case of a flood. Usually, a floating pump sits in an existing body of water, such as a lake or river, and pumps it from one area to another through a single pipe, or a network of multiple pipes.



An innovative company in South America designs and builds these high volume floating water pumps. Their pumps are compact, portable, self-contained units that can be quickly and easily set up in a water source. Capable of moving 740 gallons of water per second, these pumps are often used for:

- Irrigation for agricultural crops and grass for cattle
- Aquaculture projects, such as shrimp farms
- Industrial and hydro electrical plants
- Flood control
- Drainage management operations in emergency situations
- Aqueduct and sewer projects
- And other industrial pumping applications



### Summary

Customer:  
High Volume Floating  
Water Pump Manufacturer

Industry:  
Power Transmission

Challenge:  
Customer needed a partner to provide reliable, high capacity drive systems to drive their pump impellers.

Solution:  
Ramsey Products provided 3/4" pitch x 3" wide RPV silent chain, with 25 tooth and 94 tooth sprockets

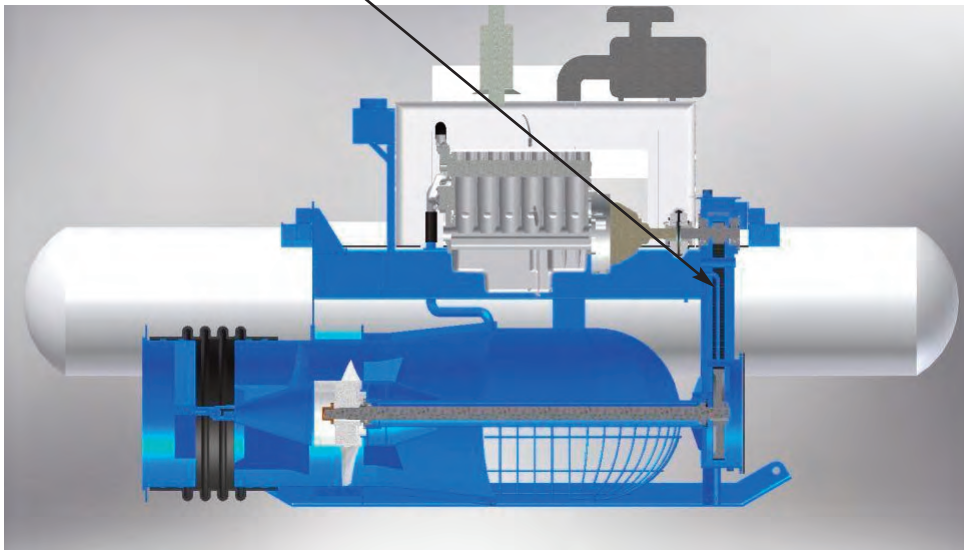
Ramsey RPV is a high performance power transmission chain that provides quiet, smooth operation, and long life.

This pump producer leads their industry in technological development and they seek to partner with companies as innovative as their own. When it came to their drive system, they sought a provider that could supply a dependable, high capacity system to drive the pump impeller during long term, continuous operation. Company engineers chose Ramsey and a Ramsey RPV drive system to satisfy their performance requirements.

Ramsey provided 3/4" pitch x 3" wide RPV silent chain, with 25 tooth and 94 tooth sprockets for this application. Ramsey's RPV series offers maximum power handling and speed capability. RPV is often the preferred chain for challenging applications where power or speed requirements exceed the capacity of other chain drives.

The pump producer also places a high value on long lasting components that are simple and inexpensive to maintain. The Ramsey RPV drives, made from hardened alloy steel components, meet their long life and low maintenance expectations.

*Ramsey RPV Chain and Sprockets power the pump impeller.*



From the pump producer:

Our company "works with Ramsey in the development of high end technology for flood control pumping systems.

Quality, reliability, customer service, and great engineering assistance make Ramsey a valued strategic provider.

We work together to keep innovating and satisfying both present and future customer needs."

-Enrique Segrera  
Engineer

Other RPV benefits:

- Innovative stamping methods maximize the amount of load bearing surface in each link and greatly reduce the rate of chain elongation during operation.
- All links are shot peened to improve fatigue strength and produce a uniform, high quality finish.
- Sprockets employ an involute tooth profile to decrease impact loading and vibration
- Chain engages sprockets nearly tangent to the sprocket pitch circle, reducing velocity variation produced by chordal action
- Reduced velocity creates less vibration resulting in higher load carrying capacity.



The floating pump is an extraordinary tool for solving urban or rural water problems. Ramsey Chain is pleased to be working with such an innovative company and proud to provide the silent chain drives for their pumps.

